

Prices effective as of January 21, 2020

<b>Per Space</b>	
Additional Perpetual Care Charge of (ONE TIME FEE) <u>included</u> in price;	\$200.00
Original, One, Two and Three & Christus Gardens	\$650.00
Section Six <i>Includes headstone foundation</i>	\$750.00
Serenity Rose Garden	\$450.00
Babyland	\$350.00
Memorial Markers <i>Per marker-In Memorial Garden Section of Cemetery Only</i>	\$450.00
<b>Opening and Closing</b>	
Adult Weekday	\$475.00
Adult Saturday	\$800.00
County Service	\$300.00
Baby Weekday	\$175.00
Baby Saturday	\$500.00
Cremains Weekday	\$325.00
Cremains Saturday	\$650.00
Cremains 2nd Right of Interment	\$300.00 **
<b>**Additional charge added to the opening and closing fee on <u>any</u> right of 2nd Interment Burial**</b>	
<b>Disinterment</b>	
Adult	\$700.00
Baby or Cremains	\$250.00

*Effective October 1, 2014, a \$10.00 filing fee will be added to the purchase of all lots.*

**Burials will be allowed upon notification of the City of Kimball any day of the year with the exception of Holidays as set by the Kimball City Council for city employees or on Sundays.**

**Weekday burials must be completed by 4:00 p.m.  
Saturday burials must be completed by 12:00 p.m.  
(Noon).**

***For Questions or Concerns, please  
contact:***

*City of Kimball Cemetery*

*223 South Chestnut Street  
Kimball, Nebraska 69145*

*Phone: (308) 235-3639*

*Fax: (308) 235-2971*

*www.kimballne.org*

# *Kimball Cemetery*

## *Christus Garden*

## *Serenity Rose Garden*

## *Memorial Garden*

*The Cemetery is open 24 hours a day*  
**CITY OF KIMBALL CEMETERY**  
**RULES AND REGULATIONS**

1.No plot may be defined by any kind of fence, coping, railing, border, hedge, or embankment; nor may any plot be filled above the established grade. No plot or grave space may be decorated by its owner or others with any tree or shrub. Planting of live flowers next to a headstone is not allowed.

2.Artificial or fresh cut flowers may be placed in an approved vase at any time; however, they will be discarded when dead,

faded, broken or otherwise substantially deteriorated. An approved vase is permanent, constructed for cemetery use, and installed by a licensed and bonded monument company. Under no circumstances may glass, ceramics, bottles or jars be placed on the grounds.

3.Placement of decorations on the ground will not be allowed April 1, through October 31. Examples of things not allowed include, but are not limited to: shepherds hooks, metal or wooden rods, solar lights, toys, unattached vases, spiked cone containers, metal designs, stones, glass or ceramic statues or flowerpots. All of these things can become projectiles and cause harm to people and objects in surrounding area. Decoration may be placed on the grave November 1 through April 1, if any time before or after these dates they will be removed and disposed of by cemetery staff.

4.Memorial Day decorations and potted plants are only permitted on grave sites 10 days before and 10 days after Memorial day. If Memorial Day decorations are not removed from grave sites within the 10 days following the holiday, they will be removed and disposed of by cemetery staff.

5. The City of Kimball shall have authority to remove any flowers, floral designs, weeds, trees, shrubs, plants, or herbage of any kind from the Cemetery as soon as in, the judgment of the Cemetery staff , they become unsightly, detrimental or diseased.

6. The City of Kimball reserves the right to prevent the removal of any trees, shrubs, plants, or herbage of any kind unless the Cemetery Superintendent gives his consent.

7. The City of Kimball shall not be liable for floral pieces, baskets, frames in which or to which floral pieces are attached. The City of Kimball shall not be liable for lost, misplaced, or broken floral vases.

8. The City of Kimball shall not be responsible for plants, herbage, or shrubs of any kind damaged by the elements, thieves, vandals or by other causes beyond its control.

9. Flowers placed on the gravesite at the time of interment shall be left undisturbed after the interment is complete, until final removal under the instructions of the Cemetery staff. When the flowers, and the frames to which they are attached, are removed from the grave, such items may be disposed of by the City of Kimball in any manner it sees fit.

10. Flags will be permitted to the sides of the marker or monument or in a permanent or in-ground reversible vase and will be removed when deemed unsightly by the Cemetery staff to prevent offending Cemetery patrons.

11. Organizations' metal markers must be placed in the foundation of the marker or monument, or they will not be allowed to remain in the Cemetery.

12. Permanent vases that are not in line with markers or monuments are not allowed in the Kimball Cemetery. In Ground/Reversible must be kept upside down during the mowing season unless in use.

13. Permanent vases will not be permitted in front or back of marker or monument. They must be placed to either side.

14. It is prohibited to cut, pick, deface, or mutilate any Cemetery plantings.

15. Foot markers are not allowed, unless kept flush with the established grade. Please contact Cemetery Caretaker for more information.

16. Concrete/Granite foundations for markers and monuments shall be required in all sections of the cemetery with the exception of Christus Garden, Serenity Rose Garden and Memorial Garden at the discretion of the Cemetery Caretaker and City Administrator in case of special

circumstances. All foundations shall only be installed with the permission, and under the supervision of the Cemetery Caretaker. Concrete/Granite foundations shall not exceed 24 inches in width. They must be kept level with the lowest established grade, and not exceed the length of property owned. The City of Kimball Cemetery Caretaker reserves the right to remove any Foundation Marker or Monument placed without permission.

17. Foundations/Washes are not permitted for markers in Christus Garden.

18. Any monument company that shall enter the City of Kimball Cemetery for work on markers or monuments, shall give the Cemetery Caretaker 24 hours notice before arrival to complete such work.

19. Memorial Garden allows only memorial markers. No burials. The cemetery provides a concrete runner for mounting the memorial marker. Memorial markers are not allowed in the rest of the cemetery.

## **CITY OF KIMBALL CEMETERY** **SECTION GUIDELINES**

### **SECTIONS** **ORIGINAL, ONE, TWO THREE** **AND FOUR**

#### **Foundations**

Foundations are required for markers, Monuments and Headstones. Foundations must be 4' for a singles space and 8' for a double space. Foundations shall not be more than 24" wide and at least a 4" wash from base. For special Foundation requirements, contact the Cemetery Caretaker.

#### **Memorial Garden**

One Memorial Marker per space. Marker space 3'x 3'. Flat marker only mounted on

**Burials will be allowed upon notification of the City of Kimball any day of the year with the exception of Holidays as set by the Kimball City Council for city employees or on Sundays.**  
**Weekday burials must be completed by 4:00 p.m.**  
**Saturday burials must be completed by 12:00 p.m. (Noon).**

concrete runner.

### Vases and Other Items

Permanent or In Ground/Reversible vases and other items are allowed in Sections Original, Two and Three. Vases and other items will not be permitted in front or back of marker or monument. Vases and other items must be placed to the sides of marker or monument. Temporary vases and other items placed to the sides of the marker are allowable in accordance with rule #3 and must be stuck into the ground.

### Burial per Space

One full burial or one full burial and one Cremains burial is permitted per single space. Two Cremains burials per space is permitted. Full burials require, as a minimum, a concrete grave liner/box. Cremains burial must be placed within a suitable container made of materials such as wood, metal, plastic or cement. Use of an urn vault is optional.

## **SECTION CHRISTUS GARDEN**

### Foundations

Foundations are not required. No foundation washes are allowed.

### Markers

Only flat markers are allowed. Markers may be made of granite, marble or bronze. Markers shall not be more than 36" x 14" for a single space and 60" x 14" for a double space.

### Vases and Other Items

Only In Ground/Reversible vases and other items built within the Marker are allowed. Vases and other items will not be permitted in front or back of marker or monument. Vases and other items must be placed to the sides of Marker, Monument or Headstone. Temporary vases and other items placed to the sides

of the marker are allowable in accordance with rule # 3 and must be stuck into the ground.

### Burial per Space

One full burial or one full burial and one Cremains burial is permitted per single space. Two Cremains burials per space is permitted. Full burials require, as a minimum, a concrete grave liner/box. Cremains burial must be placed within a suitable container made of materials such as wood, metal, plastic or cement. Use of an urn vault is optional.

## **SECTION SERENITY ROSE GARDEN (CREMAINS BURIALS ONLY)**

### Foundations

Foundations are not required. No foundation washes are allowed.

### Markers

Only flat markers are allowed. Markers may be made of granite, marble or bronze. Markers shall not be more than 24" x 14" for a single space and 36" x 14" for a double space.

### Vases and Other Items

Only In Ground/Reversible vases and other items built within the Marker are allowed. Vases and other items will not be permitted in front or back of marker or monument. Vases and other items must be placed to the sides of Marker. Temporary vases and other items placed to the sides of the marker are allowable and must be stuck into the ground.

### Burial per Space

One Cremains burial per space. Cremains burial must be placed within a suitable container made of materials such as wood, metal, plastic or cement. Use of an urn vault is optional.

## **SECTION MEMORIAL GARDEN (MEMORIAL MARKERS ONLY)**

### Foundations

Foundation is concrete strip provided in this section.

### Memorial Markers

Flat markers only, no vases or decorations. Marker size-24" x 14". Must be ordered and placed by insured monument company.

Burials will be allowed upon notification of the City of Kimball any day of the year with the exception of Holidays as set by the Kimball City Council for city employees or on Sundays. Weekday burials must be completed by 4:00 p.m. Saturday burials must be completed by 12:00 p.m. (Noon).

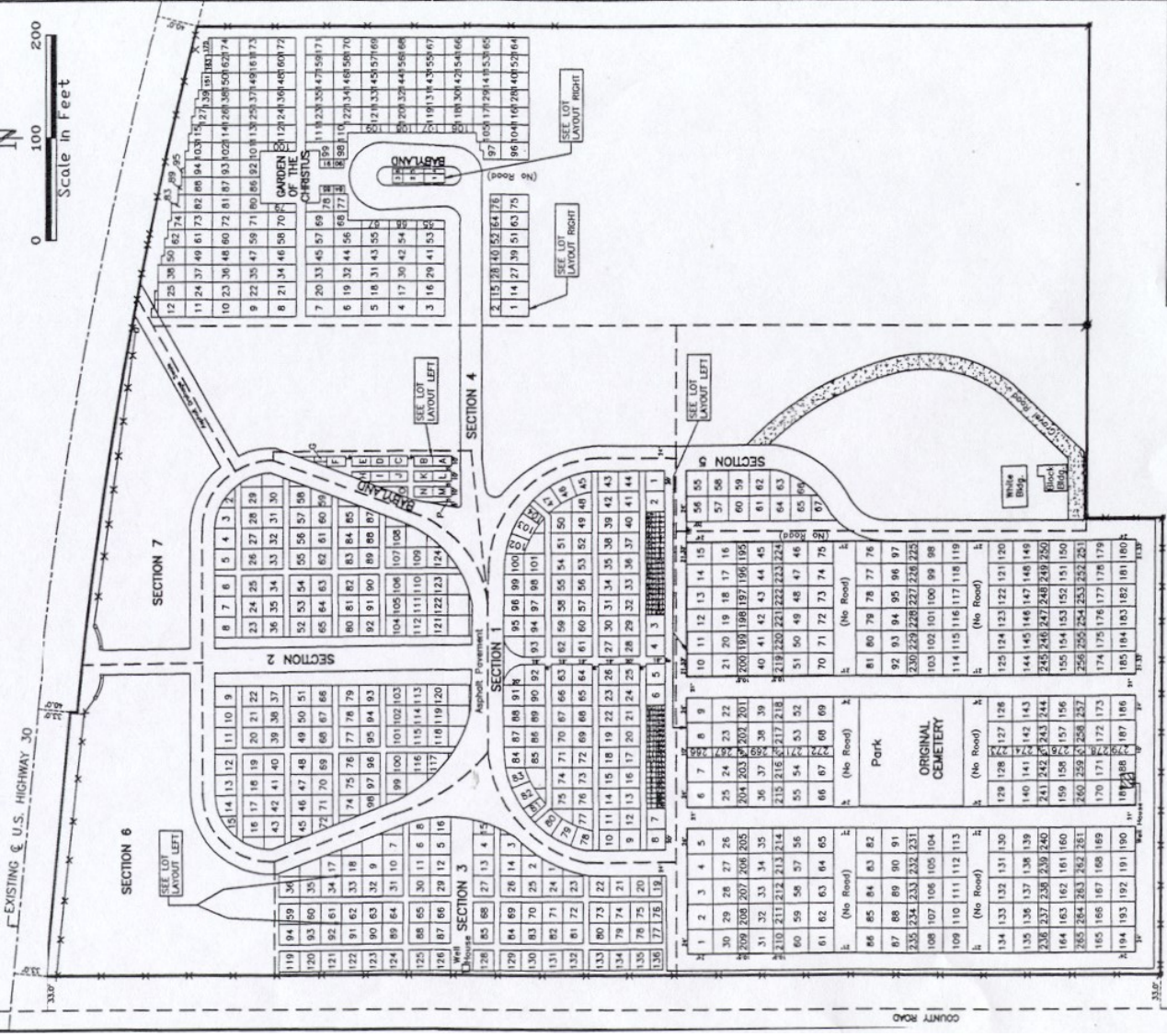
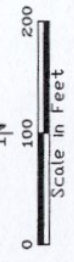
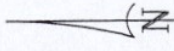
*Amended January 21, 2020*




# KIMBALL CEMETERY

KIMBALL, NEBRASKA

Northwest Corner  
Sect. 30, T15N-R55W



Southwest Corner  
Sect. 30, T15N-R55W

PREPARED BY:  
  
 H. C. SCARP AND ASSOCIATES, INC.  
 1000 WEST 10TH STREET  
 KANSAS CITY, MISSOURI 64105

A full size map may be found on the Cemetery Directory, which is located at the north end of Section One, or at City Hall, 223 South Chestnut Street.  
 A complete Cemetery Index is found on the back side of the directory.